



■ ■ ■

TRAXMATE PRODUCT CATALOGUE 2026

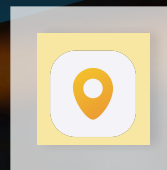
- This catalogue contains trackers currently fully integrated and seamlessly usable with Traxmate.
- Traxmate also supports 2000+ trackers by an Open Source Package called Traccar (see that full list [here](#)).
- If your preferred device can not be found, contact us at support@traxmate.io and we will integrate it.

OUR CATEGORIES



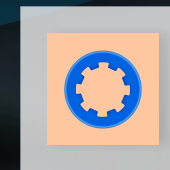
Personal Safety

These trackers improve safety and security operations with real-time seamless indoor and outdoor alerts, positioning and tracking.



Asset Tracking

These trackers keep equipment and inventory under control with live location updates, indoor to outdoor, plus automatic movement alerts.



Multi Purpose

These trackers can serve multiple purposes and are not limited to one domain of tracking.



- This catalogue contains trackers currently fully integrated and seamlessly usable with Traxmate.

- Traxmate also supports 2000+ trackers by an Open Source Package called Traccar (see that full list [here](#)).

- If your preferred device can not be found, contact us at support@traxmate.io and we will integrate it.

Personal Safety Trackers



These trackers improve safety and security operations with real-time seamless indoor and outdoor alerts, positioning and tracking.

Read more about our use cases [here!](#)

Concox PL200



Connectivity : Cellular 4G
Positioning Technology : Wi-Fi and GPS
Best Case Accuracy : ~5 m

MeiTrack P88L



Connectivity : Cellular or Wi-Fi
Positioning Technology : Wi-Fi and GPS
Best Case Accuracy : ~2 m

Seed Studio T1000



Connectivity : LoRaWAN
Positioning Technology : Wi-Fi, BLE and GPS
Best Case Accuracy : ~5 m

Codepoint Cora CT1000



Connectivity : LoRaWAN
Positioning Technology : Wi-Fi, BLE and GPS
Best Case Accuracy : ~5 m

MOKOSmart LW006



Connectivity : LoRaWAN
Positioning Technology : Wi-Fi, BLE and GPS
Best Case Accuracy : ~5 m

Lifefinder Watch



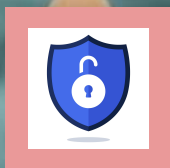
Connectivity : LoRaWAN
Positioning Technology : Wi-Fi
Best Case Accuracy : ~5 m

- This catalogue contains trackers currently fully integrated and seamlessly usable with Traxmate.

- Traxmate also supports 2000+ trackers by an Open Source Package called Traccar (see that full list [here](#)).

- If your preferred device can not be found, contact us at support@traxmate.io and we will integrate it.

Personal Safety Trackers



These trackers improve safety and security operations with real-time seamless indoor and outdoor alerts, positioning and tracking.

Read more about our use cases [here!](#)

Fifotrack Q3



Connectivity : Cellular

Positioning Technology : Wi-Fi and GPS

Best Case Accuracy : ~4 m

Abeeway Smart Badge



Connectivity : LoRaWAN

Positioning Technology : Wi-Fi/BLE and GPS

Best Case Accuracy : ~5 m

Abeeway Micro Tracker



Connectivity : LoRaWAN

Positioning Technology : Wi-Fi /BLE and GPS

Best Case Accuracy : ~2 m

MOKOSmart LW004-PB



Connectivity : LoRaWAN

Positioning Technology : BLE and GPS

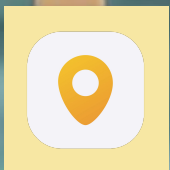
Best Case Accuracy : ~5 m

- This catalogue contains trackers currently fully integrated and seamlessly usable with Traxmate.

- Traxmate also supports 2000+ trackers by an Open Source Package called Traccar (see that full list [here](#)).

- If your preferred device can not be found, contact us at support@traxmate.io and we will integrate it.

Asset Trackers



These trackers keep equipment and inventory under control with live location updates, indoor to outdoor, plus automatic movement alerts.

Read more about our use cases [here!](#)

Digital Matter Barra EDGE



Connectivity : Cellular

Positioning Technology : Wi-Fi and GPS

Best Case Accuracy : ~5 m

Sensitive Square Xtreme



Connectivity : LoRaWAN

Positioning Technology : Wi-Fi and GPS

Best Case Accuracy : ~5 m

MeiTrack MT710



Connectivity : Cellular

Positioning Technology : Wi-Fi and GPS

Best Case Accuracy : ~4 m

Digital Matter Yabby EDGE



Connectivity : Cellular

Positioning Technology : Wi-Fi and GPS

Best Case Accuracy : ~5 m

Semtech Reference Tracker

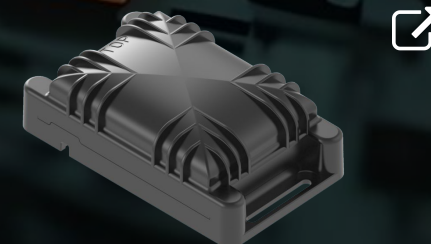


Connectivity : LoRaWAN

Positioning Technology : Wi-Fi and GPS

Best Case Accuracy : ~5 m

Abeeway Compact Tracker



Connectivity : LoRaWAN

Positioning Technology : Wi-Fi /BLE and GPS

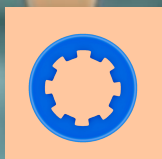
Best Case Accuracy : ~2 m

- This catalogue contains trackers currently fully integrated and seamlessly usable with Traxmate.

- Traxmate also supports 2000+ trackers by an Open Source Package called Traccar (see that full list [here](#)).

- If your preferred device can not be found, contact us at support@traxmate.io and we will integrate it.

Multi Purpose Trackers



These trackers can serve multiple purposes and are not limited to one domain of tracking.

Read more about our device integrations [here!](#)

WNC All EV Boards



EV Board

Connectivity :	Cellular
Positioning Technology :	Cell-ID and Wi-Fi
Best Case Accuracy :	N/A

Sony Chip ALT1350



Chipset

Connectivity :	Cellular 4G
Positioning Technology :	Cell-ID and Wi-Fi
Best Case Accuracy :	N/A

Axis BWC W110/W120



Body Worn Camera

Connectivity :	Cellular or Wi-Fi
Positioning Technology :	Wi-Fi and GPS
Best Case Accuracy :	~4 m

Abeeway Micro Tracker



Multi Purpose

Connectivity :	LoRaWAN
Positioning Technology :	Wi-Fi /BLE and GPS
Best Case Accuracy :	~2 m

Google Pixel 7a



Multi Purpose

Connectivity :	Cellular
Positioning Technology :	All
Best Case Accuracy :	~2 m

- This catalogue contains trackers currently fully integrated and seamlessly usable with Traxmate.

- Traxmate also supports 2000+ trackers by an Open Source Package called Traccar (see that full list [here](#)).

- If your preferred device can not be found, contact us at support@traxmate.io and we will integrate it.



**THANK
YOU!**

c26-384 Traxmate Product Catalogue
Version PA3